

The Maine Cancer Genomics Initiative (MCGI): Launching a Community Genomic Medicine Program in Community Practice in Maine

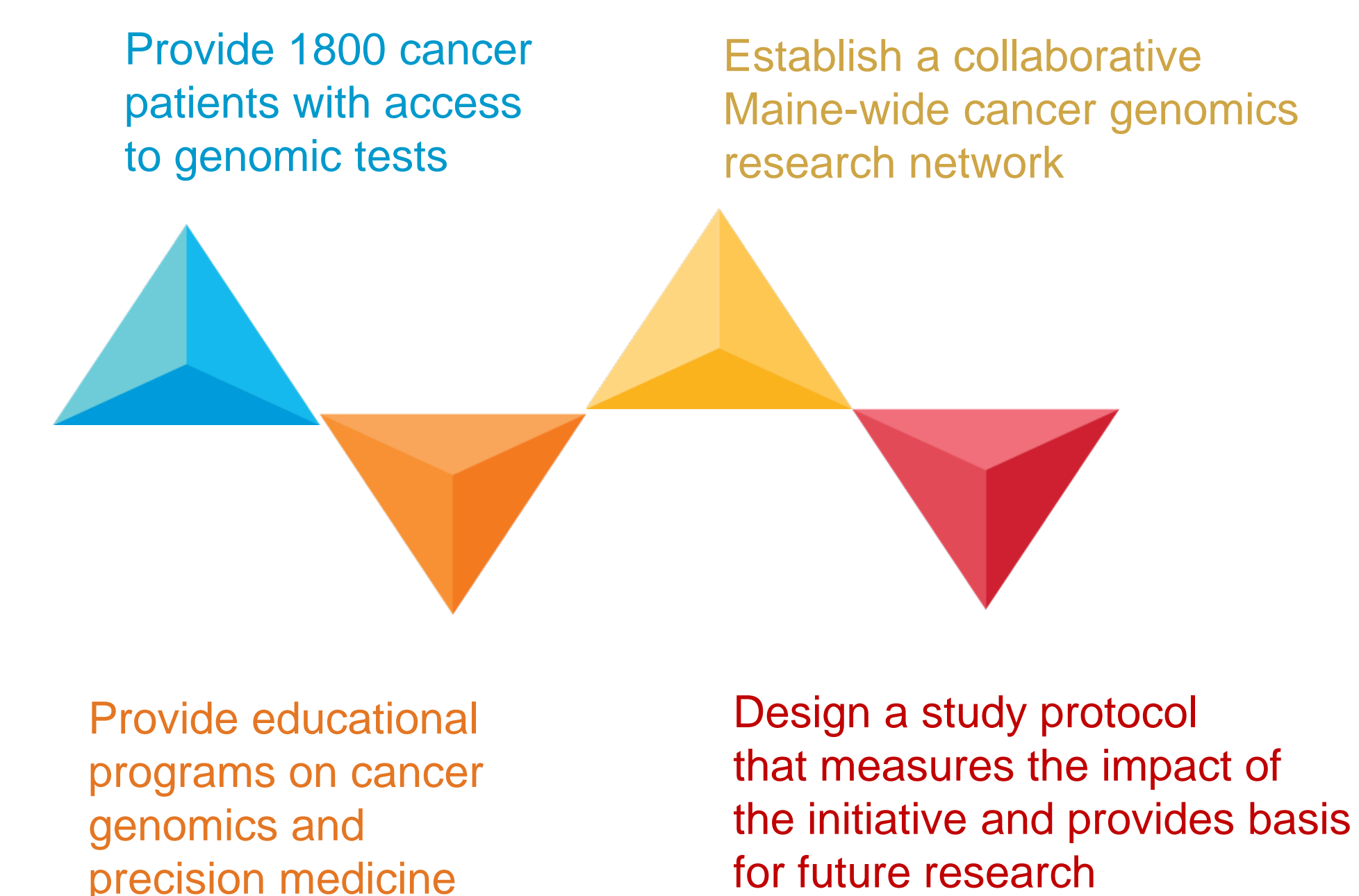
Andrey Antov, PhD,MBA², Petra Helbig, CCRP², Jennifer Bourne, MS², Rachel Male², Honey Reddi, PhD,FACMG³, Susan Mockus, PhD³, Kathleen Adams, MBA³, Kate Reed, MPH,CGC¹, Emily Edelman, MS,CGC¹, *Leo Waterston, MA⁴, *Susan Miesfeldt, MD⁴, *Paul Han, MD,MA,MPH⁴, Jens Rueter, MD²

The Jackson Laboratory (JAX), Bar Harbor¹/Augusta², ME and Farmington³, CT and Center for Outcomes Research and Evaluation (CORE) at Maine Medical Center Research Institute, Portland, ME⁴

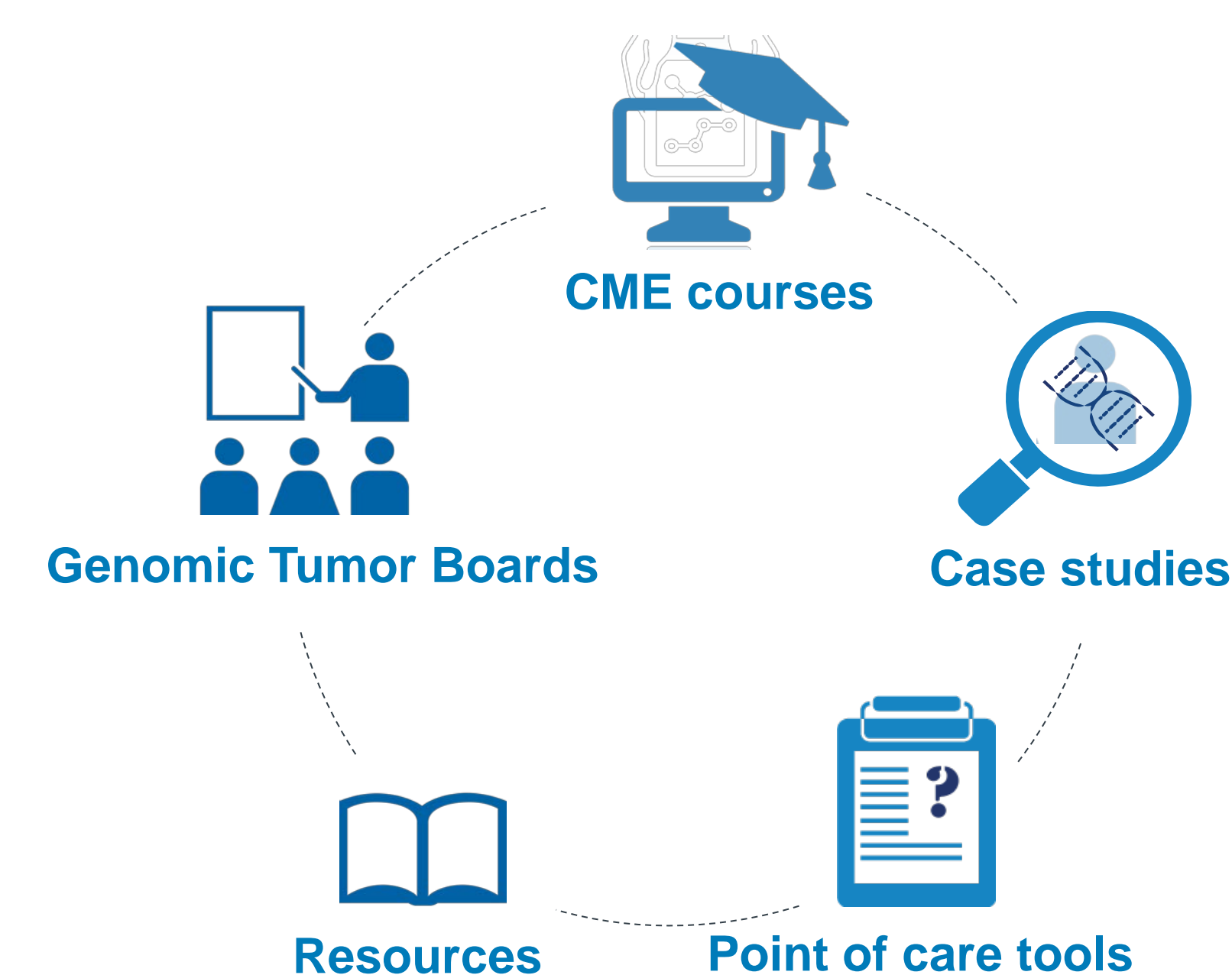
Introduction

- Sophisticated NGS-based genomic tests interrogating a large number of genetic alterations in tumor tissue have recently been developed but many barriers exist in the integration of these methodologies into community practice.
- The MCGI, a partnership between JAX, the Maine Medical Center Research Institute (MMCRI) and the largely rural Maine oncology community, was established to facilitate the integration of novel genomic technologies into community oncology practice.
- Key components of the MCGI include an education program, genomic tumor board support and dedicated operational support from the MCGI project office.

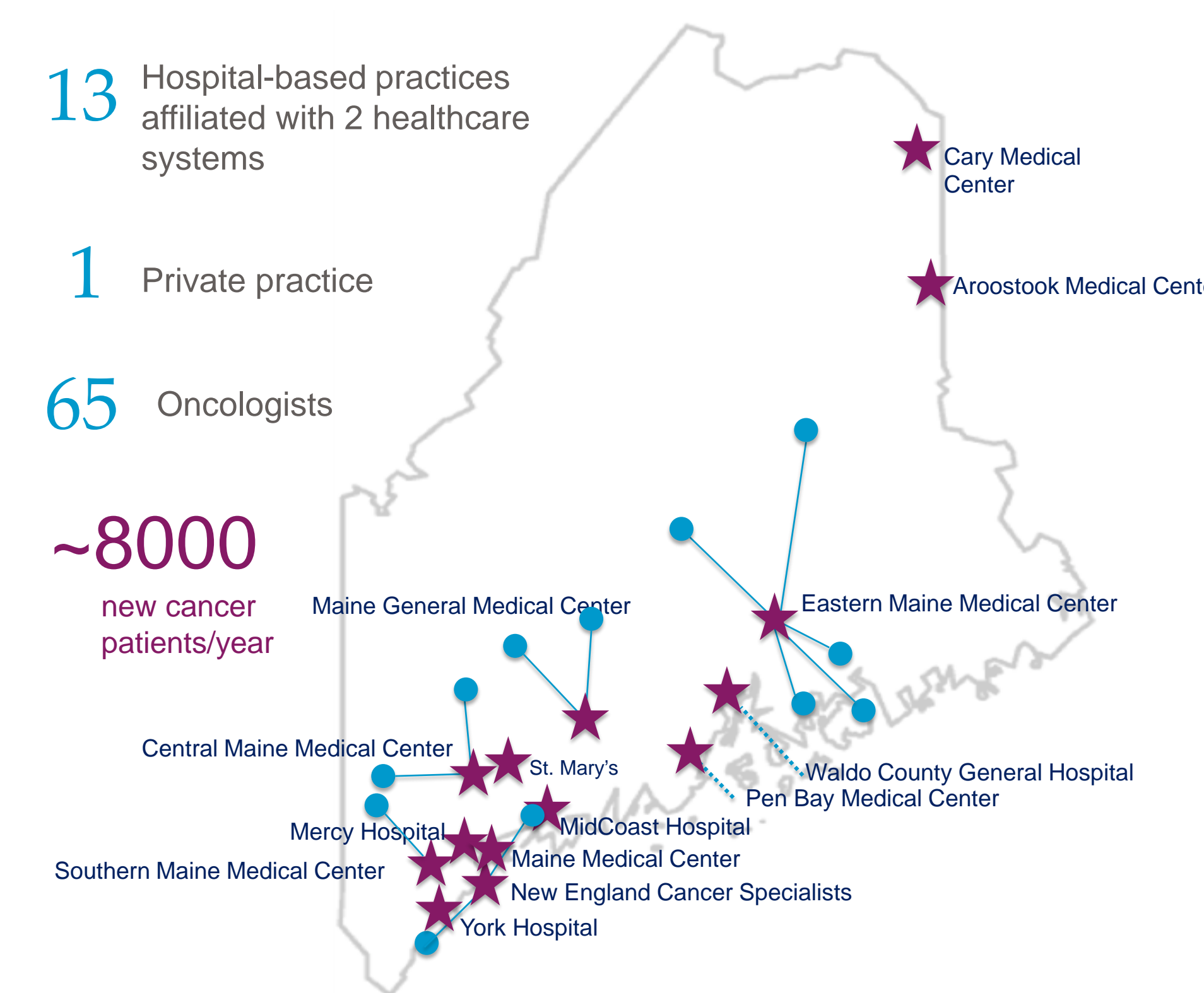
What will the Maine Cancer Genomics Initiative provide?



Education Program



Maine Cancer Genomics Initiative Network



Clinical Steering Committee

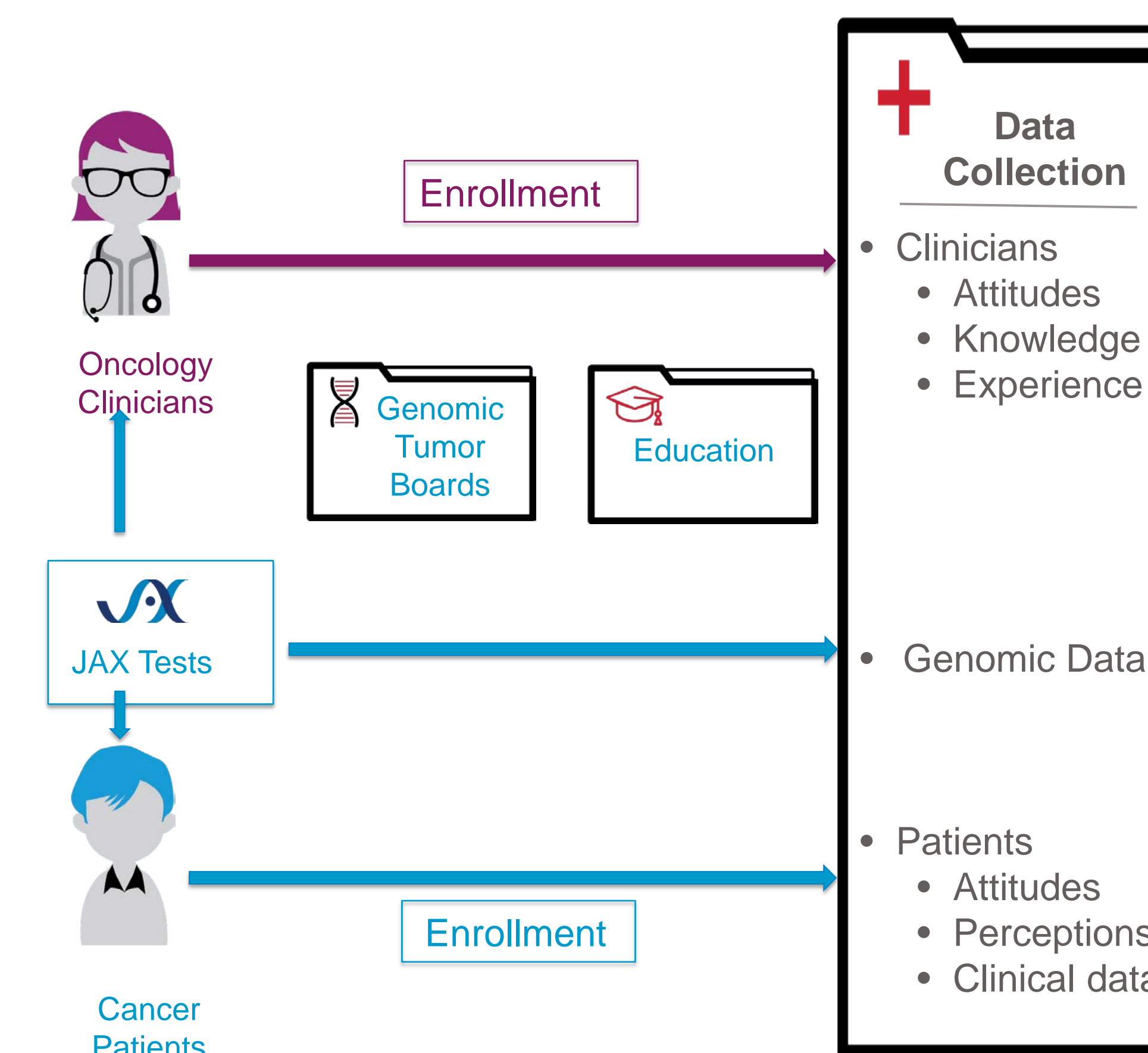


Philip Brooks, MD
Robert Christman, MD
Elizabeth Connelly, DO
Christopher Darus, MD(not pictured)
Nicolette Erickson, MD
Antoine Harb, MD
Peter Georges, MD
Roger Inhorn, MD
Mayur Movalia, MD(not pictured)
Richard Polkinghorn, MD(not pictured)
Nadia Rajack, MD(not pictured)
Karen Rasmussen, PhD
Scot Remick, MD
Peter Rubin, MD(not pictured)
Sarah Sinclair, DO(not pictured)
Marek Skacel, MD(not pictured)
Christian Thomas, MD

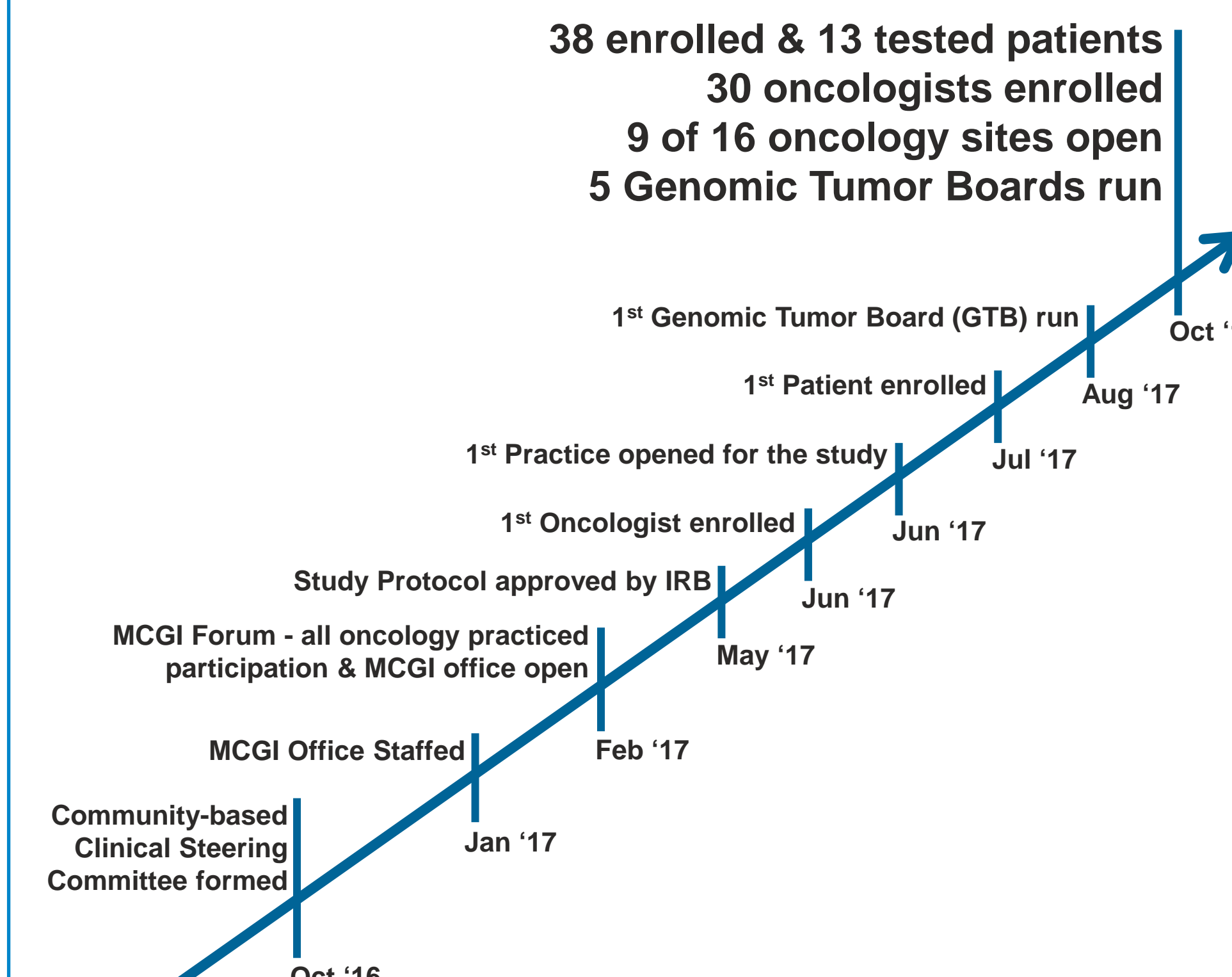
Eastern Maine Medical Center
Spectrum Medical Group
Waldo County General Hospital
Maine Medical Center
Central Maine Medical Center
Eastern Maine Medical Center
York Hospital
Mercy Hospital
Dahl-Chase Pathology Associates
MaineGeneral Hospital
Cary Medical Center
Spectrum Medical Group
Maine Medical Center
Maine Medical Center
Eastern Maine Medical Center
Dahl-Chase Pathology Associates
New England Cancer Specialists

* Committee members listed in alphabetical order, not order in photograph

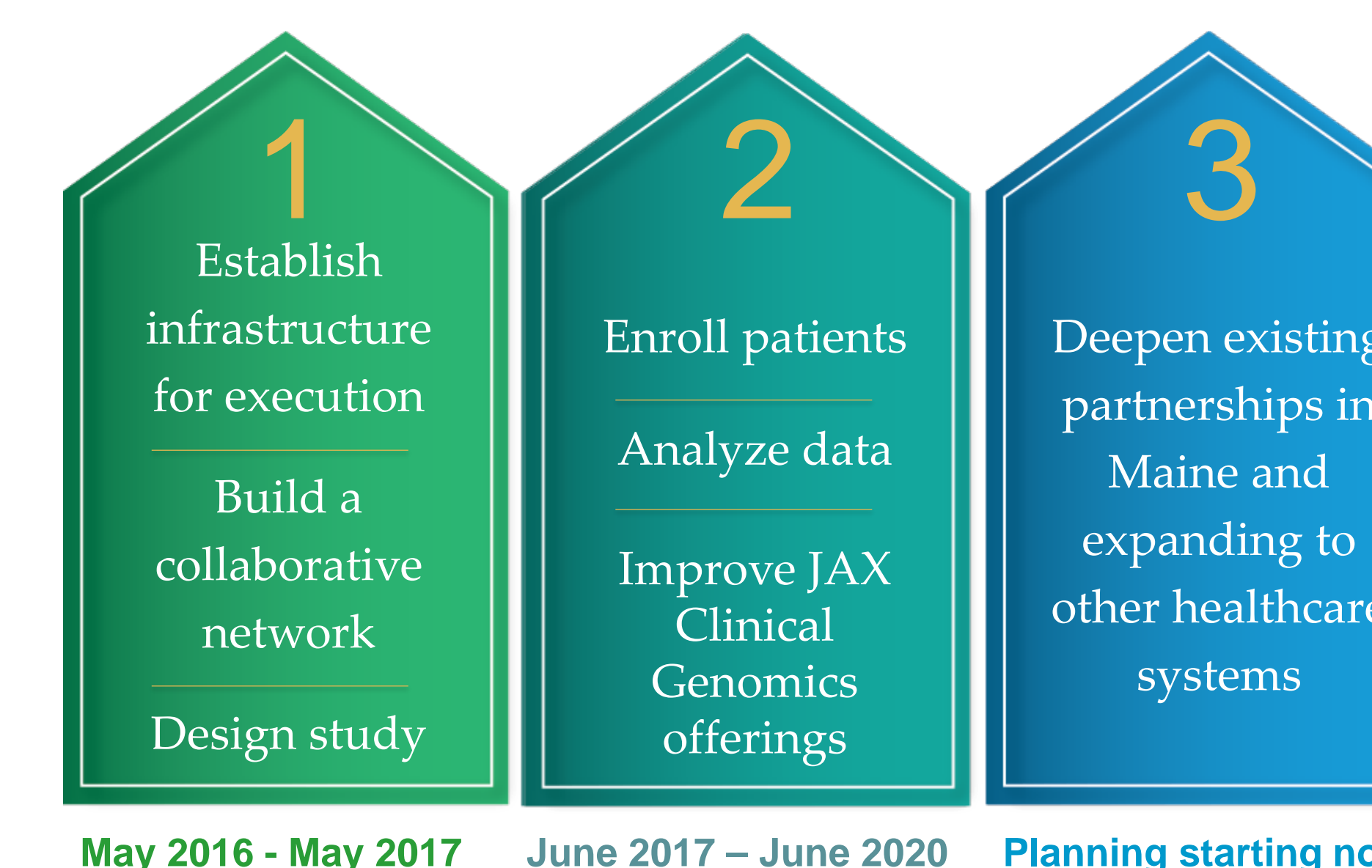
Study Protocol



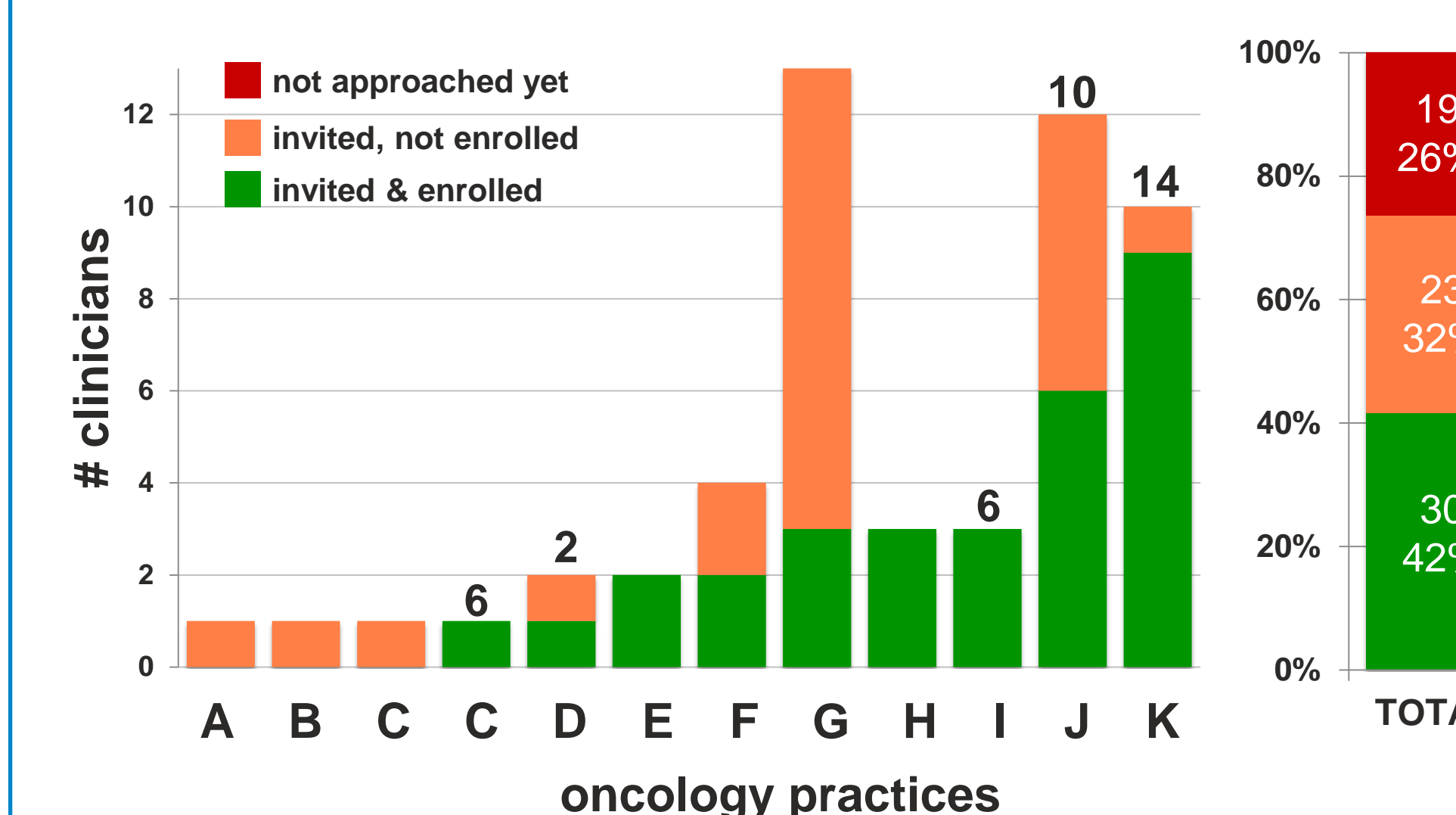
MCGI Timeline



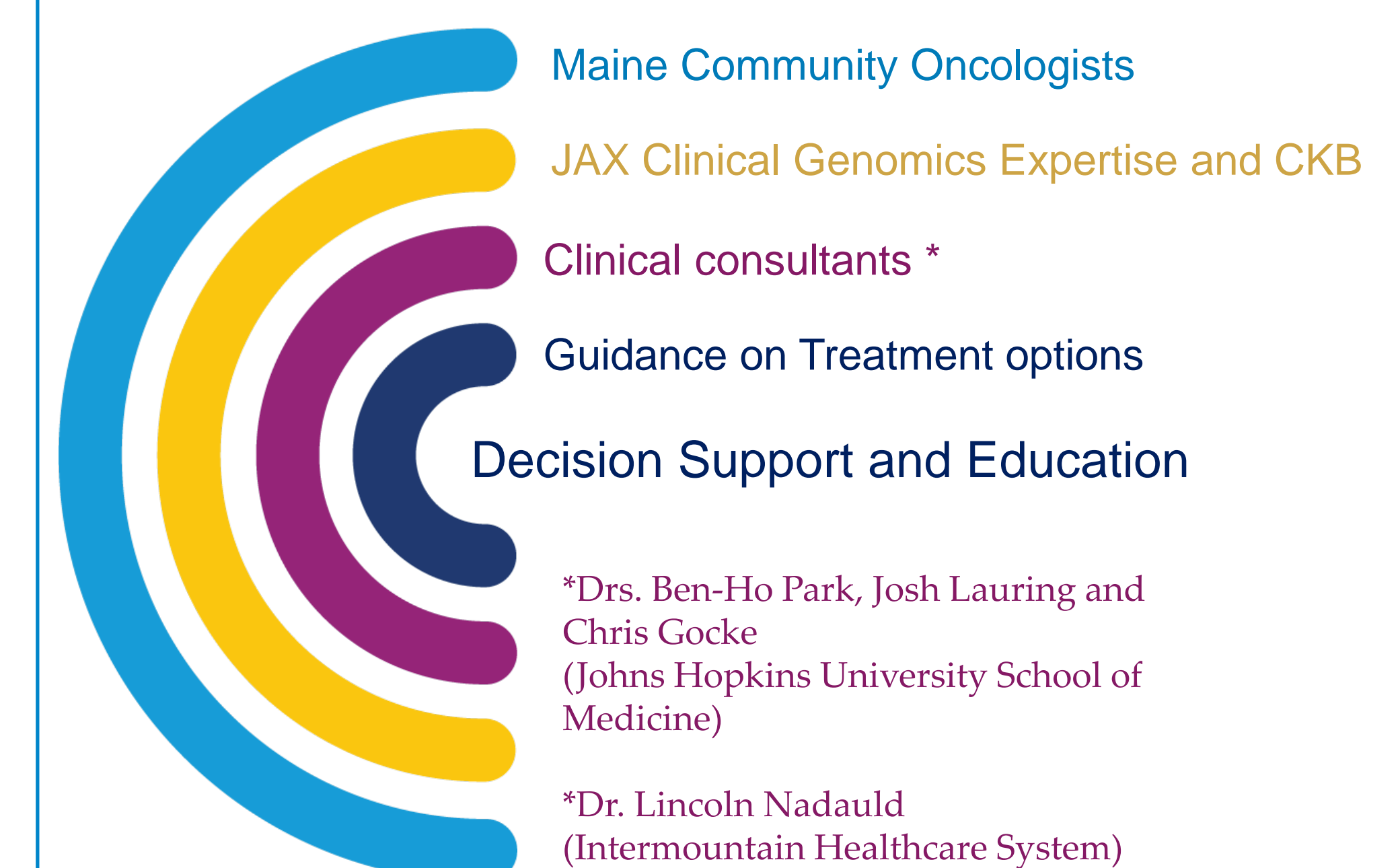
MCGI Implementation



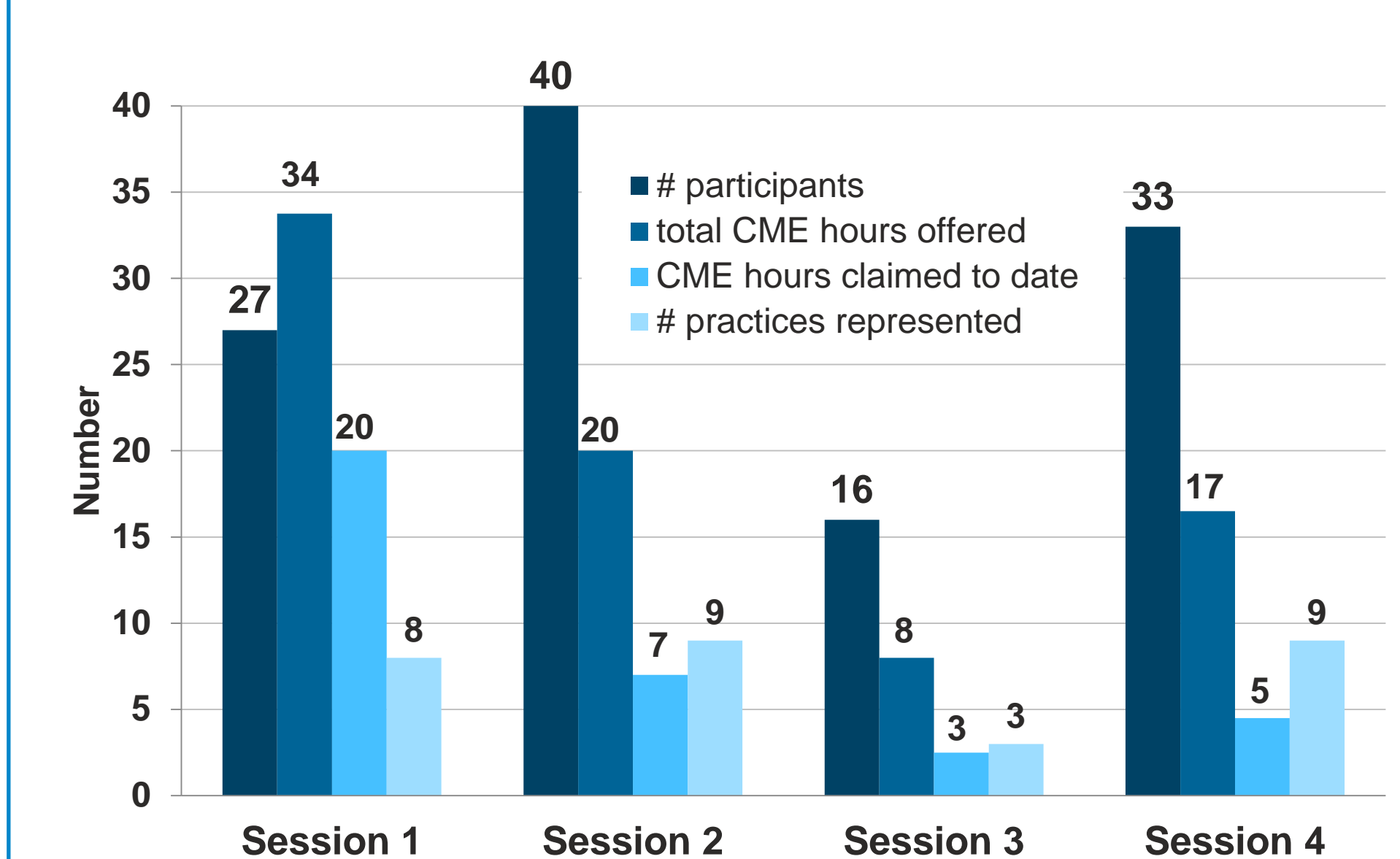
Clinician Participation by Practice (enrolled patients # above graph bars)



Genomic Tumor Boards



Genomic Tumor Board Participation



Conclusions

- Onboarding and enrollment of sites and clinicians into the study has proceeded swiftly, indicating the potential for additional translational outreach opportunities in other healthcare systems and geographic areas.
- The Maine Cancer Genomics Initiative is an opportunity for both translational implementation and research.
- Research opportunities include outcomes, health communication and health care utilization research as well as identifying novel patterns of genomic data in clinical phenotypes.
- We see a potential for expanding the MCGI's translational outreach model to other healthcare systems and geographic areas.